

WHAT'S IN YOUR WATER?



TAP WATER CONTAINS A NUMBER OF ELEMENTS THAT CAN AFFECT YOUR GROW.

What is hard water?

Hard water has high mineral content compared to **soft water**. If you've got hard water, using an RO filter is highly recommended.



How **hard** is your water?

CF READING	
■ SOFT TO MODERATELY SOFT	0-3
■ MEDIUM TO MODERATELY HARD	4-5
■ HARD TO VERY HARD	6+

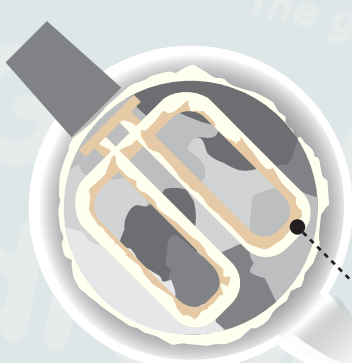
USE A BLUELAB CF TRUNCHEON TO READ THE CF OF YOUR WATER



Available from GroWell!

HOW TO TELL IF YOU'VE GOT HARD WATER

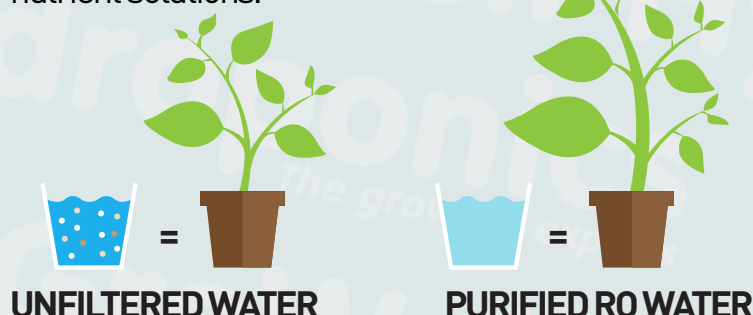
LOOK FOR SIGNS OF LIMESCALE AT THE END OF YOUR TAP!



... AND INSIDE YOUR KETTLE!

Why should you use an RO filter?

It lets you remove contaminants from your water, giving you full control over nutrient solutions.



UNFILTERED WATER

PURIFIED RO WATER

AN RO FILTER REMOVES / REDUCES

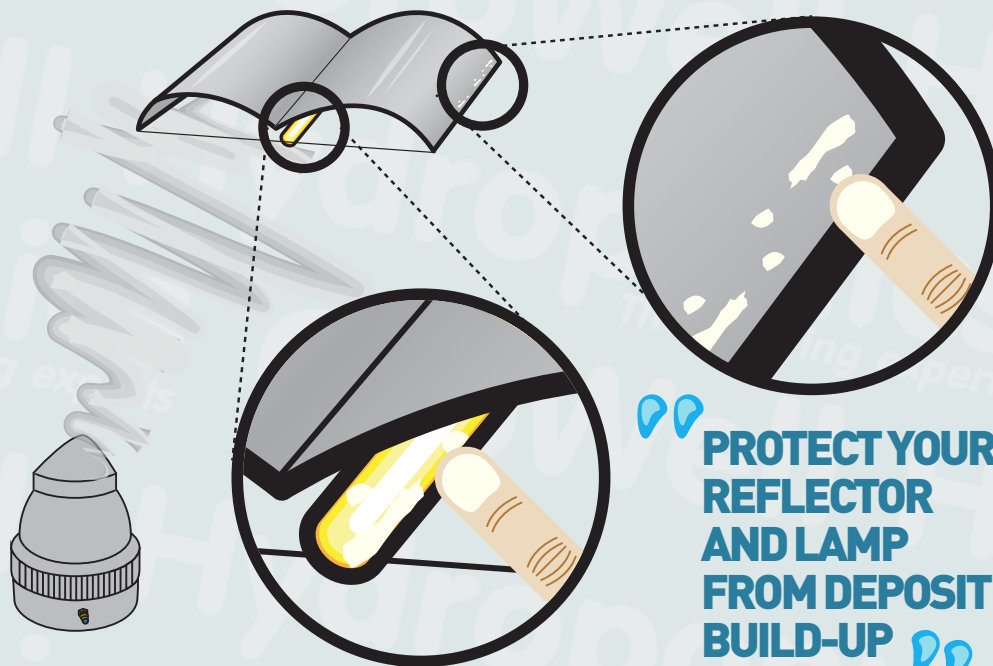
CaCO₃	CALCIUM CARBONATE
MgCO₃	MAGNESIUM CARBONATE
Cl	CHLORINE

10%

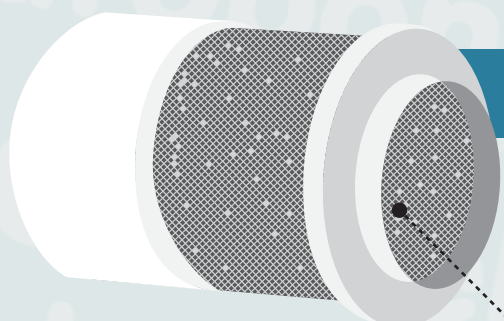
LOSS OF REFLECTIVITY OVER 3 MONTHS IF YOU USE HARD WATER IN YOUR HUMIDIFIER

YOU MUST USE RO WATER WITH A HUMIDIFIER

OTHERWISE MINERAL DEPOSITS CAN BE LEFT ON YOUR GROW ROOM EQUIPMENT.



PROTECT YOUR REFLECTOR AND LAMP FROM DEPOSIT BUILD-UP



CARBON FILTERS CAN BE DAMAGED TOO!

- POOR EXTRACTION
- LIMITS ODOUR CONTROL
- SHORTENS FILTER LIFE
- BLOCKS UP FABRIC SLEEVES

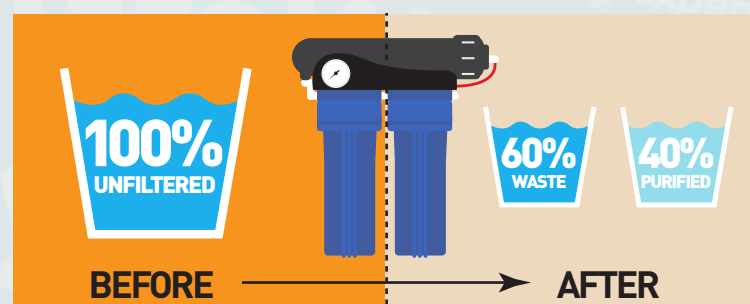
FILTER CLOGGED UP WITH DEPOSITS!

HOW DOES AN RO FILTER WORK?

RO CREATES PURE WATER FOR MY PLANTS TO USE

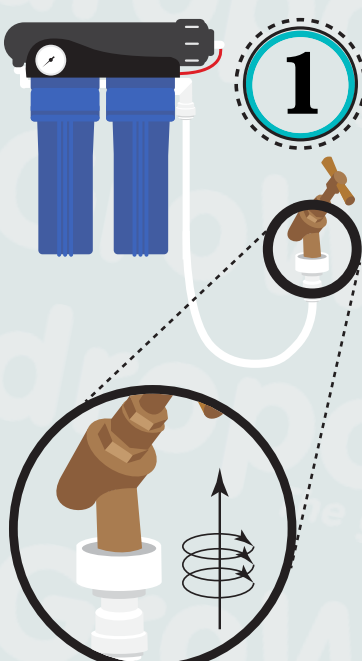
95% TAP CONTAMINANTS REMOVED

99% CHLORINE REMOVED



HOW TO... INSTALL AN RO FILTER

GROWMAX FILTERS ARE READY TO USE
STRAIGHT OUT THE BOX WITH TWO EASY CONNECTION OPTIONS



1 CONNECT TO A TAP

Screw the supplied fitting onto a standard threaded 3/4" garden tap. Push the supplied 3/8" white pipe into the fitting on the tap, and the other end into the fitting on the RO Machine. Turn the tap on, **job done!**

Need some help setting it up? **Speak to GroWell for advice!**

2 TAP INTO A PIPE

Using the supplied fitting, clamp around a copper or plastic water supply pipe. Insert 3/8" pipe into the fitting and the other end into the RO machine. Screw the tap to pierce the pipe, then unscrew to start water supply. **Bish Bash Bosh!**



GroWell
The growing experts

For more info or to order more of these products
Call 0333 033 22 95 or visit growell.co.uk