

11. Connect the Flow Fitting to the Pump as shown with the male thread. Connect the long end of the Flow Fitting to the base of the Inlet Fitting (under the Plant Bed) with the female thread, positioning the pump as shown. Thread the Pump plug and cable out of the tank under the back of the Plant Bed. If you are using a water-heater/chiller/air-stones/ water-mover or any other supplementary equipment, these should also be positioned at this point.

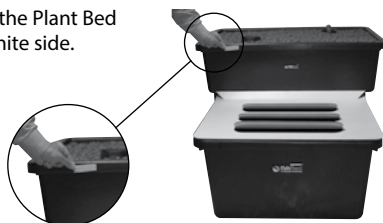


Fish Tank Cover

12. Push the vent flaps up and bend the hinge and upright support, before trying to fit your Fish Tank Cover. Stick two of the Velcro Strips, white side down to the Fish Tank Cover, as per image, leaving the sticker cover on the black side.



13. Stick the other two Velcro Strips, black side down, to the front lip of the Plant Bed starting 10cm in from each edge, leaving the sticker cover on the white side.



14. Place the Fish Tank Cover on the Fish Tank as shown with the flap on the hinge UP against the front of the Plant Bed, to line it up correctly. Lift the hinge without moving the Fish Tank Cover and remove the sticky back from the black side of the Velcro, then press the hinge down firmly to secure it to the Fish Tank. Remove the remaining backing from the white side of the Plant Bed Velcro strips and lift the (fixed) Fish Tank Cover to the open position and press firmly against the lip of the Plant Bed. When putting the Fish Tank Cover down for the first time it will be necessary to manually separate the two halves of the Velcro strips.



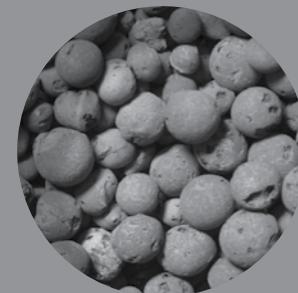
15. **Your FishPlant Family Unit is now ready to fill with water** – please now refer to the FishPlant Guide to learn how to get it ready to stock and plant.



FishPlantTM
Living food ecosystems



FishPlant Family Unit Build Instructions



www.fishplant.co.uk



FishPlant Family Unit

Before you start check all parts are present:**Build Instructions**

1. Place Fish Tank in position, with FishPlant logo facing forward, ensuring it is on a firm level surface. If your FishPlant Family Unit is to be used in full sunlight, do not have it facing south, as this may lead to algae problems in the Fish Tank.

2. Place Plant Bed Stand straddling the Fish Tank, about 15cm from the back.

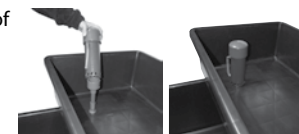
Plant Bed

3. With the FishPlant logo at the front, connect the Inlet Fitting to the back hole with the spout facing back, and ensure a tight fit. Connect the Auto-Siphon Downspout to the front hole and ensure a tight fit. Please note – the funnel top is a push fit only to allow easy maintenance at a later date.

4. Position the Plant Bed squarely on the Plant Bed Stand with the FishPlant logo facing forward.



5. Place the Auto-Siphon Shroud over the Downspout so it sits flat on the base of the Plant Bed.



6. Place the Auto-Siphon Screen over the Shroud again ensuring it sits flat on the base of the Plant Bed.

**Plant Bed Pebbles**

7. Your Pebbles will be very dusty due to transit. Pre-wash the pebbles to get rid of the majority of the dust. Use the Fish Tank – pour in all the Pebbles, half fill with water and stir.



8. Transfer the Pebbles to the Plant Bed using a free draining container with holes smaller than the Pebbles – aquatic pots or a garden riddle are ideal but a large plant pot will do – draining off as much of the water as practical. Take care placing the first few scoops around the Shroud while holding it in position, as you do not want it to shift and Pebbles to get underneath. It may be worth rinsing the last few scoops under running water as they will hold lots of dust and small particles. Also take care when the Plant Bed is nearly full, not to get any Pebbles inside the Screen. Level the surface, it should be about 1cm from the lip of the Plant Bed.



9. Discard the dirty water from the Fish Tank – it should pull out easily when nearly empty to drain, then replace in position. Pour water into the Plant Bed, with a hose or bucket, rinsing down the pebbles, until the Auto-Siphon cycles (about 60 litres) the cycle begins when it actually starts siphoning (as opposed to just overflow) emptying the Plant Bed at a high flow rate – the water will still run brown. The Plant Bed will empty into the Fish Tank. Discard this water and repeat this process until the water appears clear – 4 complete cycles should be enough. If possible all the discarded water should be re-used, if allowed to stand the dust will settle out and if carefully decanted can be used in your FishPlant, alternatively use it to water other areas of the garden (the dust is harmless).



10. Hollow out some pebbles under the Inlet and position the Splashguard so the Inlet will flow directly into the depression. Replace the pebbles around the Splashguard.

